



National Tax and
Customs Administration

EMAP

EVENT-BASED
DATA REPORTING
PLATFORM - ePAYROLL



A man and a woman are sitting at a desk in an office, looking at a laptop. The man is wearing glasses and a suit, and the woman is wearing a light-colored top. They are both smiling and appear to be engaged in a collaborative work activity. The background is a blurred office environment.

INSTEAD OF FORCING PEOPLE TO UNDERSTAND
AND FOLLOW THE ADMINISTRATIVE LOGIC,

EMAP

A man and a woman are sitting at a desk in an office, looking at a laptop. The man is wearing glasses and a suit, and the woman is wearing a light-colored top. They are both smiling and appear to be engaged in their work. The background is a blurred office environment.

INSTEAD OF FORCING PEOPLE TO UNDERSTAND
AND FOLLOW THE ADMINISTRATIVE LOGIC,

EMAP

A man and a woman are sitting at a desk, looking at a laptop screen. The man is wearing glasses and has a beard, and the woman is smiling. They appear to be in a professional setting, possibly a government office or a public administration department. The image is overlaid with a semi-transparent dark grey filter.

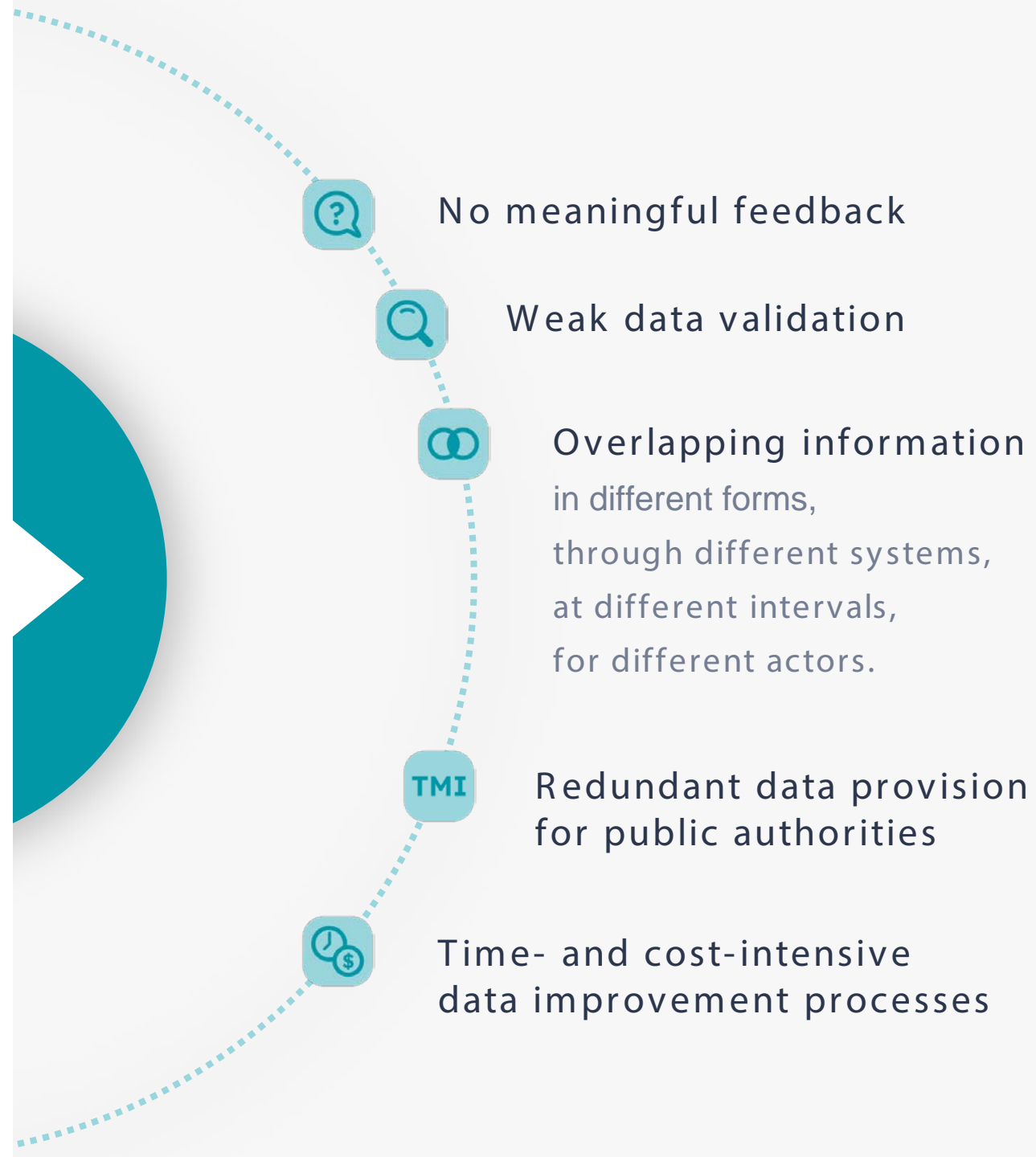
PUBLIC ADMINISTRATION PROCEDURES

SHALL ALIGN TO LIFE EVENTS AND BUSINESS PROCESSES!

EMAP

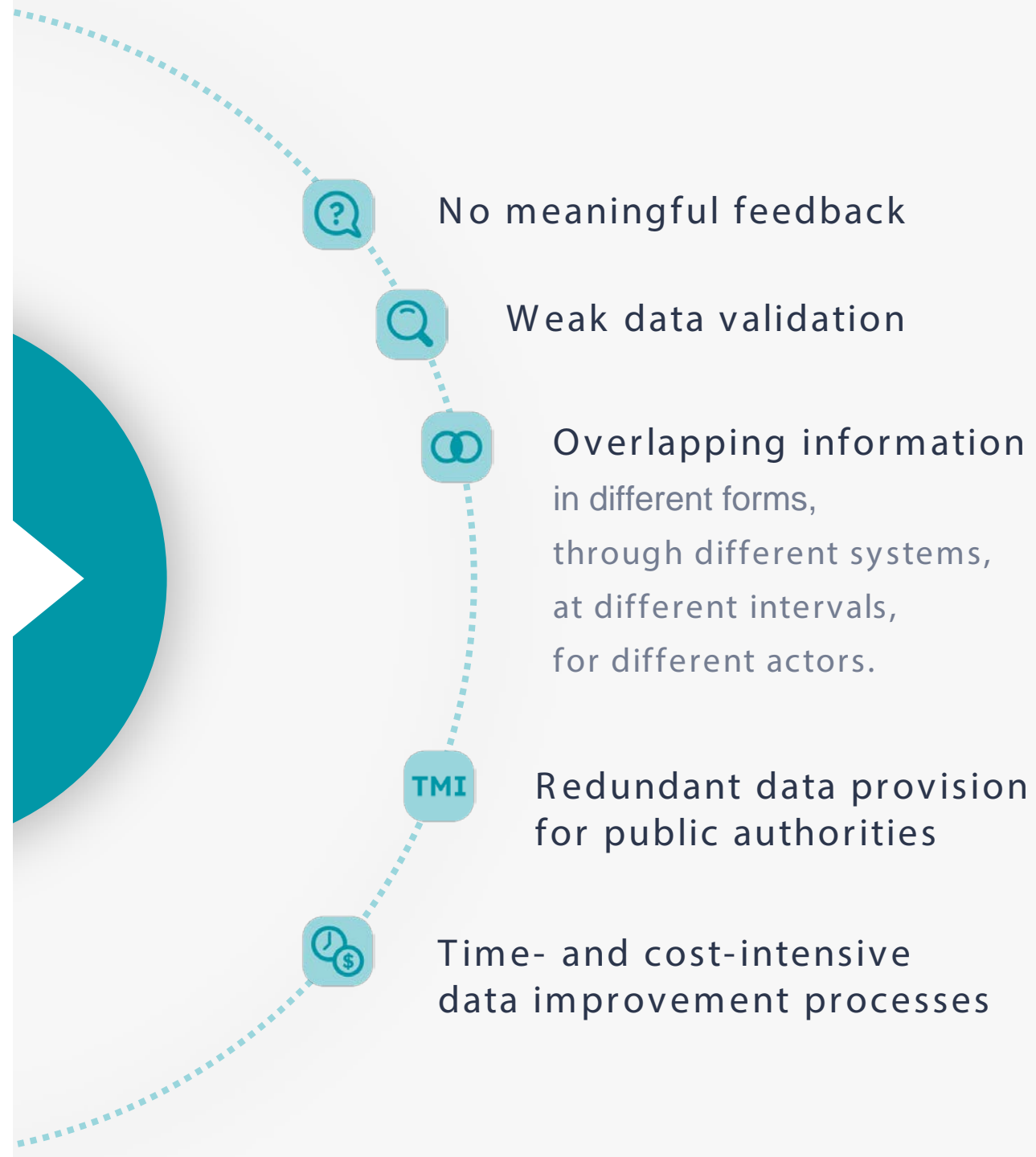
Typical features today

EMAP



Typical features today

EMAP



Requirements

(different administration and technical approach)



Handling and preventing errors during the data provision process



Building on business processes instead of specialized public administration procedures



Managing all related activities in a single web based or machine-to-machine system

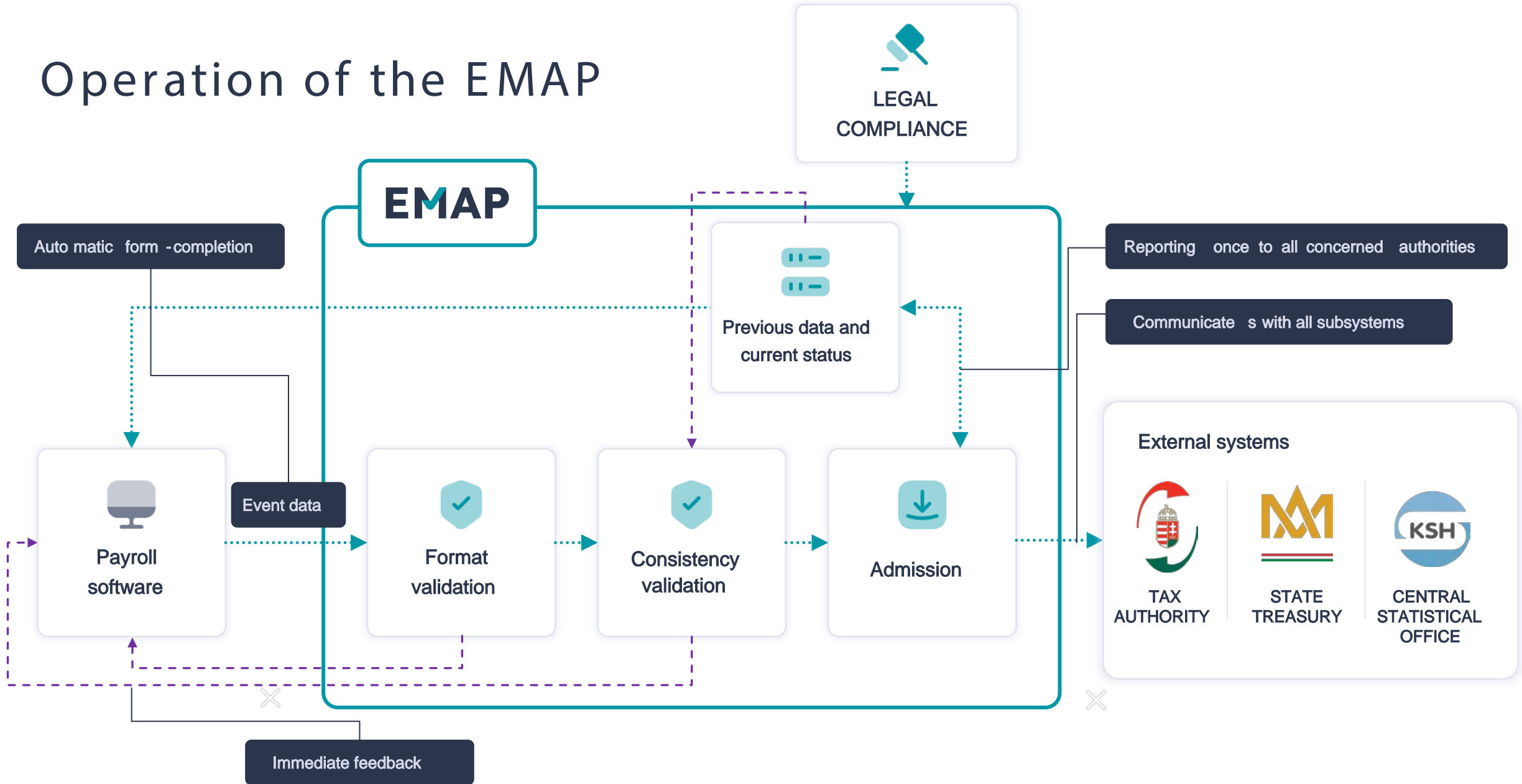
1x1

Simplification – legal, technical, formal, language



Active and two-way communication

Operation of the EMAP

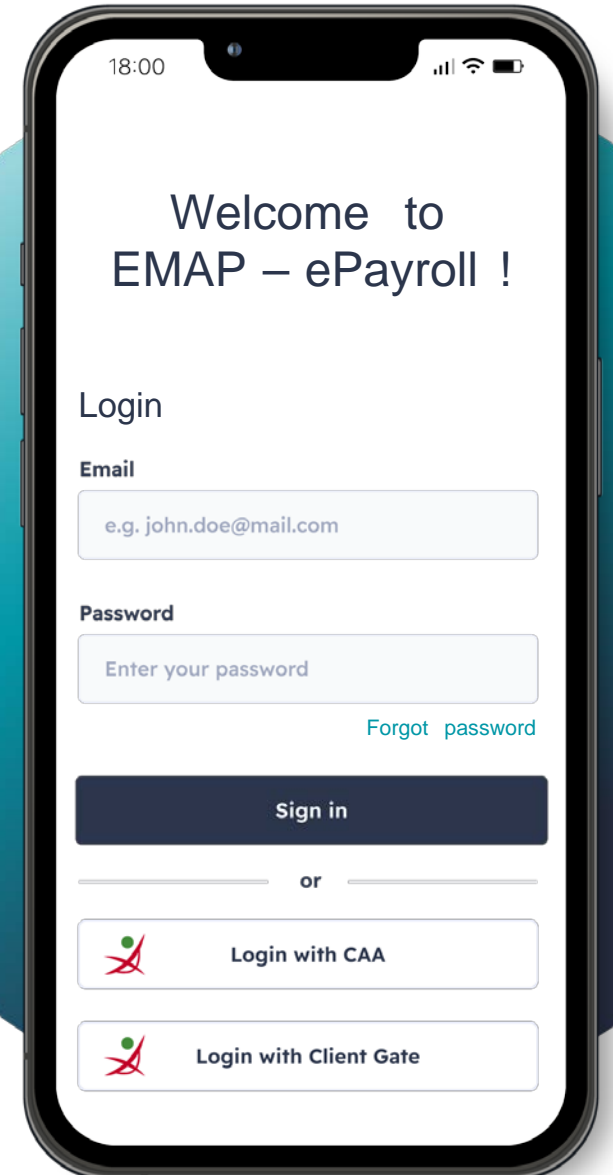


Advantages of the EMAP

Single-channel data provision from employers

- adapted to company operations
- complies to the requirements of public administration
- event -driven, not periodic
- the reports are exclusively linked to an event or to modified attributes / circumstances
- its verifiability improves data quality
- number of errors decreases thus the administrative burden is less

Employees can share valid data with their employer and can keep track of the data reported about their employment (can control e.g. their pension expectation)



EMAP Event-based data reporting platform - ePayroll



National Tax and
Customs Administration